

ICE | SANDSTONE | GREYSTONE | CHARCOAL

PEDESTRIAN PAVERS

Patio Pave 30 400x400x30mm	31.50	m2
Square Paver 400x400x40mm	35.50	m2
Luxe Paver 600x400x40mm	47	m2

POOL, WALL & STEP CAPPING

270 Seamless Capping 270x400x30mm	26	Lm
270 4 Sided Seamless Capping 270x400x30mm	26	each
Use as External Corner, Double Sided, Stepping Stone or End Piece		
Retro Bullnose 270x400x40mm	28	Lm
Corners to suit Retro Bullnose 270x400x40mm	28	each
400 Seamless Capping 400x400x40mm	31	Lm
400 4 Sided Seamless Capping 400x400x40mm	31	each
Use as External Corner, Double Sided, Stepping Stone or End Piece		

VEHICULAR TRAFFIC PAVERS

Square Paver 400x400x60mm	41	m2
---------------------------	----	----

ABROLHOS | METRO

PEDESTRIAN PAVERS

Square 400x400x30mm	52	m2
Luxe 600x400x30mm	62	m2
Circle Steppers 600, 400 or 250 x40mm	51	each

POOL, WALL & STEP CAPPING

270 Seamless Capping 270x400x30mm	45	Lm
270 4 Sided Seamless Capping 270x400x30mm	34	each
Use as External Corner, Double Sided, Stepping Stone or End Piece		
400 Seamless Capping 400x400x40mm	50	Lm
400 4 Sided Seamless Capping 400x400x40mm	38	each
Use as External Corner, Double Sided, Stepping Stone or End Piece		

VEHICULAR TRAFFIC PAVERS

Square 400x400x60mm	64	m2
Luxe 600x400x60mm (sold per pallet of 9.12m2 only)	77	m2
Rectangle 200x400x60mm	72	m2
Tactiles 400x400x60mm Off-form 2023 compliant design (Custom thickness possible)	72	m2
Multi Spec Tactiles 600x400x60mm Off-form 2023 compliant design (Custom thickness possible)	77	m2

BLUESTONE STEPPER

Honed Irregular Shape Stepping Stone Approx. 500 - 700x30mm	75	each
---	----	------

DESIGNPAVE - MONACO | BORDEAUX | SANTORINI | WHITE GRANITO | GREY GRANITO | BLACK GRANITO

Paver 600x300x20mm	65	m2
Capping 600x300x20mm	48	Lm

DESIGNPAVE - JARRAHWASH | DRIFTWOOD | BEACHWOOD

Planks 1200x200x20mm	69	m2
Capping 1200x200x20mm	53	Lm

ROMA TRAVERTINE

French Pattern Paver Sets x 30mm	85	m2
Rectangle Paver 610x305x30mm	94	m2
Capping 610x305x30mm	45	Lm
Lip Capping 610x305x30mm	105	Lm

PRIMO TRAVERTINE

French Pattern Paver Sets x 30mm	94	m2
Rectangle Paver 610x305x30mm	99	m2
Capping 610x305x30mm	48	Lm

IBIZA TRAVERTINE

French Pattern Paver Sets x 30mm	99	m2
Rectangle Paver 610x305x30mm	104	m2
Capping 610x305x30mm	48	Lm

ATLANTIS TRAVERTINE

French Pattern Paver Sets x 30mm	100	m2
Rectangle Paver 610x305x30mm	109	m2
Capping 610x305x30mm	53	Lm

ARCTIC MARBLE

Rectangle Paver 610x305x30mm	99	m2
Capping 610x305x30mm	48	Lm

OCEAN BLUESTONE

Paver 600x300x25mm	76	m2
Capping 600x300x25mm	41	Lm

HAWAIIAN SWIRL | EVEREST | WHITE QUARTZ | COPPER | KNAPPED ICE

Face Panels	97	m2
Corner Pieces	16	each

OTHER ITEMS AND SERVICES

Paving Join Grout Powder 20kg bag sweep in and wet to set anti weed / ant deter gel	20	each
Pool Skimmer Lid Kit 305x305mm stainless base, lid, key and stone insert. Coral/Quartz	385	each
Pool Skimmer Lid Kit 305x305mm stainless base, lid, key and stone insert. All Others	399	each
Stone Adhesive Tube 660ml stone to fibre glass, hardboard or stone surfaces	15	each
Adhesive Tube Gun canister style to dispense adhesive	15	each
Part Pallet Build for under half pallet orders strap, labour & bag cost	15	each
Metro/Outer Delivery to verge. Min Cost \$125/\$145. 3 Pallets \$150/\$180. 4 or more pallet loads.	40/50	each
Pallet Bond refund processed on return by client to Freo Stone with invoice #	40	each

All deliveries are to verge only and not beyond, to avoid property damage regardless of owners permission

*Sizes are approximate and no works should be started without your specific stone purchase in hand
 Freo Stone products are sold to order with notice by full piece, set, carton, bag or box nearest to units required
SEALING Stones can be damaged by some sealers and the bulk of our range we do not recommend sealing at all
 Please seek advice from our team or website to avoid damaging your stone by trusting generic labelling
Prices are ex Bibra Lake factory and outside Perth Metro Delivery may require extra packaging at extra cost
 Prices are inc G.S.T. subject to change at any time and seeking a recent valid quotation is advised*

APR24RP



like concrete, but classy...



Your outdoor space deserves to be different...

W.A. Made... coastal comfort



Ice



Sandstone



Greystone



Abrolhos

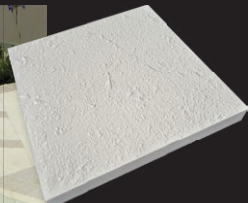


Charcoal

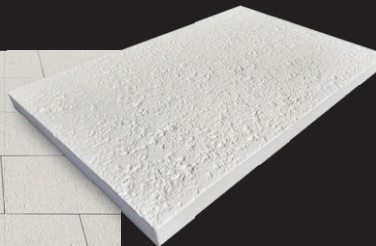


Metro

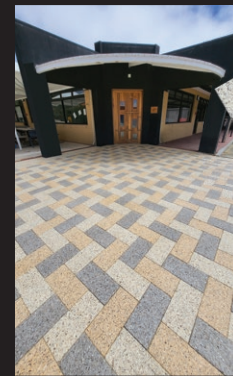
Available in



SQUARE PAVER
 SIZE 400 x 400mm
 THICKNESS
 30mm & 60mm



LUXÉ PAVER
 SIZE 600 x 400mm
 THICKNESS
 40mm
 (Abrolhos & Metro
 30mm & 60mm)

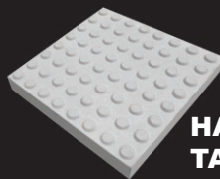


RECTANGLE PAVER
 SIZE 400 x 200mm
 THICKNESS
 60mm (Abrolhos & Metro only)

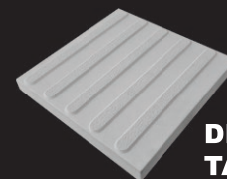
NEW



MULTI SPEC TACTILE PAVER
 SIZE 600 x 400mm
 THICKNESS
 30, 40, 50 & 60mm



HAZARD TACTILE PAVER
 SIZE 400 x 400mm
 THICKNESS
 30, 40, 50 & 60mm



DIRECTIONAL TACTILE PAVER
 SIZE 400 x 400mm
 THICKNESS
 30, 40, 50 & 60mm



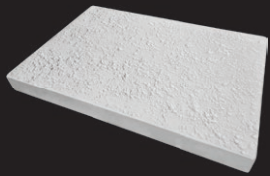
Pave Set - Sweep in and "wet to set" joint powder.
 Ensuring low maintenance whilst maintaining a classy finish with genuine pavers, not site poured imitations.

Allowing easy paver removal for:

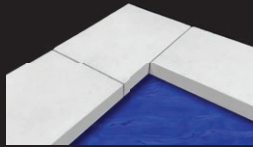
- access to water pipes & wires
- fence / patio post installations
- garden design changes
- extreme stain paver swaps
- colour matching old selections



CIRCLE STEPPERS
 SIZE
 600, 400 & 250mm
 THICKNESS 40mm



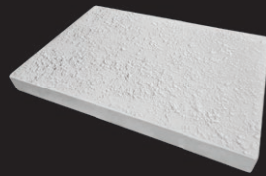
Use also for



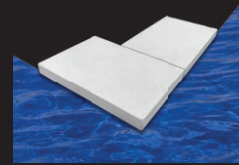
Internal Corner

270 SEAMLESS CAPPING

SIZE 400 x 270mm
THICKNESS 30mm



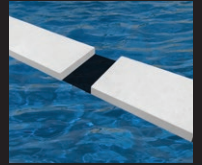
Use also for



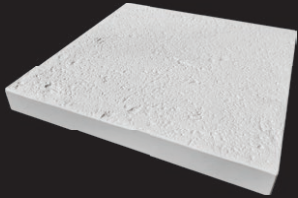
External Corner

270 4 SIDED SEAMLESS CAPPING

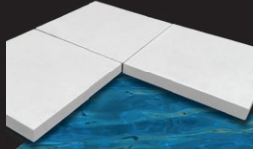
SIZE 400 x 270mm
THICKNESS 30mm



2 Sided,
End Piece or
Stepping Stone



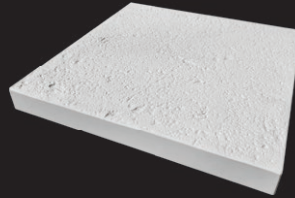
Use also for



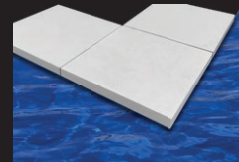
Internal Corner

400 SEAMLESS CAPPING

SIZE 400 x 400mm
THICKNESS 30mm



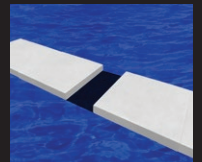
Use also for



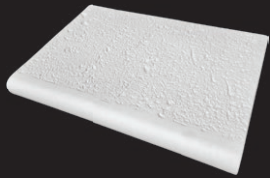
External Corner

400 4 SIDED SEAMLESS CAPPING

SIZE 400 x 400mm
THICKNESS 30mm



2 Sided,
End Piece or
Stepping Stone



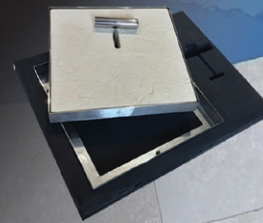
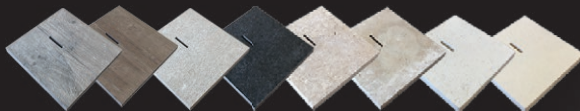
RETRO BULLNOSE CAPPING

SIZE 400 x 270mm
THICKNESS 40mm



Freo Skimmer Lid Kits... a superior finish

- More attractive, central keyhole to avoid edge chipping.
- Marine grade stainless steel, to suit most Freo Stone Pavers.
- Compliant with Australian Pool Safety Standard 1926.3 2010.
- Order to be delivered with your Pool Capping Kits.



Travertine & Marble... a genuine slice of Europe



RECTANGLE PAVER
SURFACE Honed then tumbled
SIZE 610 x 305mm
THICKNESS 30mm



FRENCH PATTERN PAVERS
SURFACE Honed then tumbled
SIZE Consisting of 203 x 203, 406 x 406, 406 x 203, 610 x 406mm
THICKNESS 30mm
 (not available in Arctic)



CAPPING
SURFACE Honed then tumbled
SIZE 610 x 305mm
THICKNESS 30mm



ROMA OVERHANGING LIP CAPPING
SURFACE Honed then tumbled (Tumbled natural cored edges.)
SIZE 610 x 305 x 80mm
THICKNESS 30mm



Roma

- Quality stone cut from Europe's best quarries.
- Lightly textured surfaces providing grip and comfort.

- Can be easily installed onto a sand base.
- Stunning variations of colour throughout each project.



ROMA



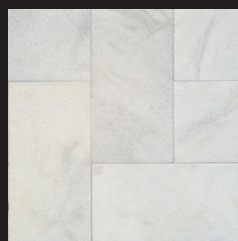
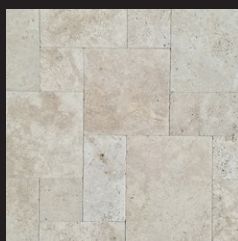
PRIMO



ARCTIC MARBLE



ATLANTIS



Your outdoor space deserves to be different...



Primo



Arctic Marble



Atlantis

DesignoPave... non-slip porcelain pavers

- ✓ Non-slip surface and no sealing required.
- ✓ Lay straight onto sand, cracker dust, concrete or plastic pedestals.
- ✓ Strength far superior to stone of even greater thickness.
- ✓ Realistic durable alternatives to natural timber and granite.

CAPPING
SIZE 600 x 300mm
THICKNESS 20mm



JARRAHWASH
Paving or Capping
SIZE 1200 x 200mm
THICKNESS 20mm



BEACHWOOD
Paving or Capping
SIZE 1200 x 200mm
THICKNESS 20mm



DRIFTWOOD
Paving or Capping
SIZE 1200 x 200mm
THICKNESS 20mm



BORDEAUX
Paving or Capping
SIZE 600 x 300mm
THICKNESS 20mm



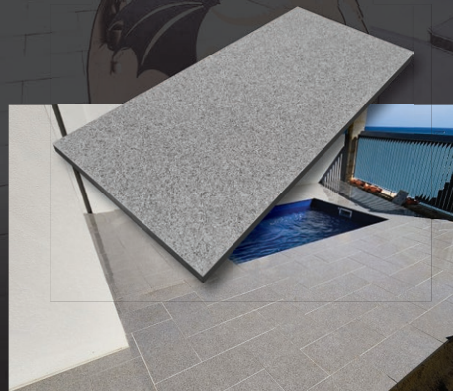
MONACO
Paving or Capping
SIZE 600 x 300mm
THICKNESS 20mm



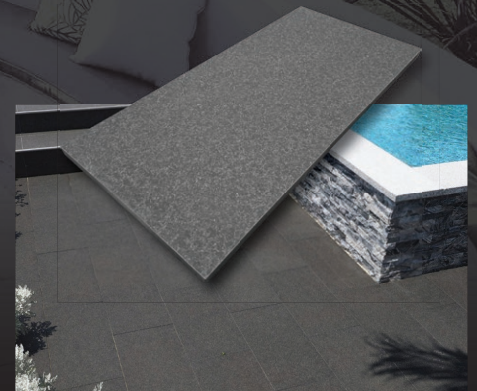
SANTORINI
Paving or Capping
SIZE 600 x 300mm
THICKNESS 20mm



WHITE GRANITO
Paving or Capping
SIZE 600 x 300mm
THICKNESS 20mm



GREY GRANITO
Paving or Capping
SIZE 600 x 300mm
THICKNESS 20mm



BLACK GRANITO
Paving or Capping
SIZE 600 x 300mm
THICKNESS 20mm

Your outdoor space deserves to be different...

Ocean Bluestone... a grey with attitude

PAVER

SURFACE Non-slip
SIZE 600 x 300mm
THICKNESS 25mm

CAPPING

SURFACE Non-slip
SIZE 600 x 300mm
THICKNESS 25mm



- Non-slip yet gentle to touch.
- Smooth edge capping.

From an overcast misty grey, to thunderous deep tones when wet. Ocean Bluestone's swirls of greys, white and golds provide a finish that is truly unique. A contemporary grey option with attitude.

Stone cladding... bringing walls to life



EVEREST
SIZE 600 x 150mm



COPPER
SIZE 600 x 150mm



KNAPPED ICE
SIZE 495 x 160mm



HAWAIIAN SWIRL
SIZE 600 x 150mm



DESERT
SIZE 600 x 150mm



WHITE QUARTZ
SIZE 600 x 150mm



Pre-cut corners are available for all colours

The beauty of natural stone is its variation in colour. Visit our sites to see current tones.

Photos above indicate approx 600mm x 600mm section.



Bluestone... natural steppers

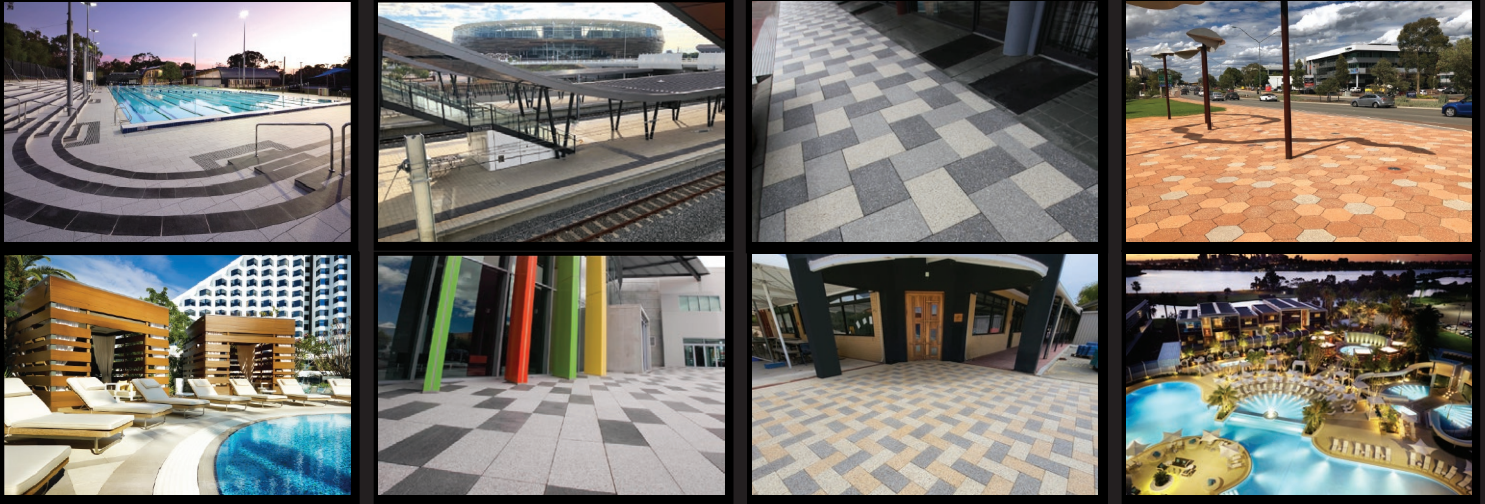


Honed surface
SIZE Various approx. 500 - 700mm
THICKNESS 30mm



Commercial... high-end spec solutions

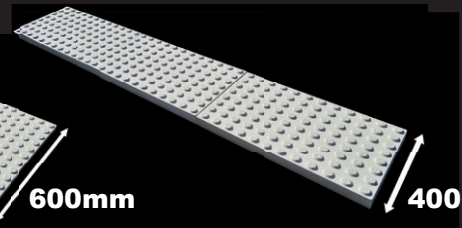
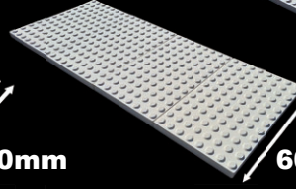
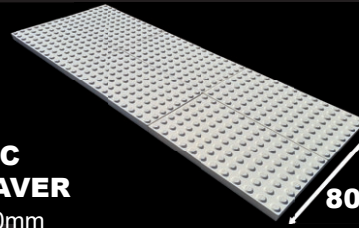
10 other colours available for commercial quantity projects.



NEW



**MULTI SPEC
TACTILE PAVER**
SIZE 600 x 400mm
THICKNESS
30, 40, 50 or 60mm



Suitable for a range of applications.

Freo Stone Paving Perth

North

South



GREENWOOD

Display and Stock Centre
29 Canham Way
Greenwood W.A.



BIBRA LAKE

Manufacturing Facility, Full Scale
Display and Stock Centre
139 Barrington Street
Bibra Lake W.A.



high tech... high quality

Freo Stone Paving utilises robotic technology to maintain a superior level of quality throughout its manufacturing operations. Combining this with only the highest grade raw materials and an experienced team, had resulted in the brand becoming the designers' popular choice Australia wide.

CUSTOMER SERVICE

08 9418 8404

info@freostone.com.au



**Free mobile design and sample units
to your Perth metro site or office**

**for more ideas visit
freostone.com.au**



Our pavers comply with Australian and New Zealand Standards AS/NZS 4586:1999 and are manufactured for uniformity of shape, colour and consistency of dimensions, however you may encounter some variation. The colours in this brochure are approximate only. Products shown are correct at the time of printing. April 2024 Freo Stone ABN 30 143 880 422.

PROJECT PROCESS TIPS FOR AN OPTIMUM RESULT

page 1 of 2

TIPS SUMMARY

Read your delivery date email and save the date to phone calendar.

Leave stone for installer to cart into site as and when needed.

Leave work area free and clean until completion to avoid damage or delay.

Never use sand for joint filling.

Use a "wet to set" joint powder/gel.

Engineered pavers – do not leave pallets unwrapped and do not stack pavers – permanent hydration stains may occur.

Only seal if required and use only the products recommended in the table overpage to avoid damage.

Sealing is for experienced professionals and DIY is not recommended.

TIPS IN MORE DETAIL

DELIVERY TO SITE

Once your payment is processed our scheduling team will produce or prepare your pallets and allocate a **delivery date**. This **date will be emailed to you** on your final receipt and can only be changed with 7 days noticed to avoid double charges by freighters who have committed drivers income to that booking. Your site is best loaded than not, as a rule. We are unable to advise what time of day between 7am & 7pm for delivery or contact freighters when driving. Please set a **reminder in your phone calendar** to ensure your site verge remains clear for set down of the number of pallets on your invoice. Pallet space required is 1.2m x 1m per pallet or crate. Then await arrival of installers to use their experience to cart the stone in a safe manner as needed to avoid chipping, damages or placement in the way of their work process.

DURING INSTALLATION

Whilst half finished works may look safe enough to walk on or touch, you may actually damage the installers alignment, levelling, fixing or grouting process. Please **leave the work area free** from foot traffic, mats, carpets, steel, water or any items which may rust, damage, stain or upset the products or workmanship. Only on completion and curing confirmation from the installer can the project be accessed, admired and enjoyed. Like anything, prevention is better than a cure.

STONE JOIN FINISHING

Next to concrete restraining of loose edges, joint filling is one of the most important components of any paving project. Filling joints (the gaps between the stones) provides long term durability of your floorspace and help hold the paving firmly in place. **Joins are never for drainage**, all paving should be installed with a fall to ensure water runs away to various drainage points and is never allowed to puddle on the stone.

Yellow or "washed" white **sand is never to be used for joint filling**. Besides holding unwanted moisture around the edges of stones when wet, these sands can allow seeds to land and grow into weeds. These seeds often travel in the breeze and can shoot down roots in any sand. Most weeds do not actually begin under the paving and despite myths about placing materials under the paving to reduce weeds, the joins on the surface are actually where the issue can be.

Washed white sand may look good on the first day but it is all down hill from there. Do not use it, there is an alternative. At a similar cost to troublesome sand, **bagged joint powders are a far superior solution** that actually expand and set firmer than sand once wet and set. Weeds struggle to anchor to these fillers, moisture runs over them and pavers can still be removed and replaced as needed for future works or additions of pipes, wiring or fences. These powders work very well when installed correctly and maintained by topping up any joints that require it post heavy cleaning or modification works for example.

These powders simply sweep in and are vibrated deep into the joints using a carpet under a compactor or other means. Then a final neat sweep in (leaving no powder on the surface) and misting from above with water a few times over 30 minutes will set the fill powder to a gel or biscuit like firm joint. Not all joint grout powders perform well over time. The most popular and successful joint grout powder with our stone is listed below as an example.

PAVE SET by adbri (available at Freo Stone Paving and used successfully in all of our displays). **PAVE-LOK** is another.

End Page 1 of 2 - See overpage for Sealing and Care

PROJECT PROCESS TIPS FOR AN OPTIMUM RESULT

SEALING IF REQUIRED

Many sealers can actually damage stone. Seal only if required using Freo Stone Paving Approved Sealers.

The stone itself is durable and sealing does not make it any more so. Sealing may simply make some mess easier to clean.

The sand, leaves, food or other items will still land on the surface and make it dirty, but a sealer may make it easier to remove. Sealing is about the environment the stone is in, not the stone itself. The same stone may be subjected to no mess at one site and many messy factors at another. Some choose to see what their stone is subjected too for a while first and then engage a cleaning and sealing professional if needed. Some are aware the area will be subject to mess and will seal from the start.

No Sealer is better than the wrong sealer. We can help with dirty paver solutions. We can't help damage from the wrong sealer. Below we offer a guide developed through years of experience and feedback with our stones. A guide we follow for our own sites and homes.

Paver Type	Standard Finish (Natural to light sheen)	Enhanced Finish (Darkened to wet look)
Coral Range	Bondall Paving & Concrete Sealer Matt Finish Available @ Freo Stone Paving	NOT RECOMMENDED
	Spirit Seal Natural Paving Sealant Available @ PC Coatings 0419 951 657	
	CCS Streetscape Available @ CPC&S 0404447299	
Quartz Range	Bondall Paving & Concrete Sealer Matt Finish Available @ Freo Stone Paving	CCS Hi-Build Available @ CPC&S 0404447299
	CCS Streetscape Available @ CPC&S 0404447299	CCS Stainblock Available @ PC Coatings 0419 951 657
	Q-Coat Water-Based Available @ PC Coatings 0419 951 657	
Ocean Bluestone	CCS Streetscape Available @ CPC&S 0404447299	CCS Stain Block Available @ CPC&S 0404447299
	Spirit Seal Natural Paving Sealant Available @ PC Coatings 0419 951 657	CCS Stainblock Available @ PC Coatings 0419 951 657
Travertine	DO NOT SEAL	
DesignoPave - StoneDek	DO NOT SEAL	

Further technical sealer information is available @ www.bondall.com.au and www.concretocoloursystems.com.au

We highly recommend any sealing required be undertaken by an experienced professional. Inexperience can ruin your valuable investment in many ways.

Application of the wrong sealer (there are many) can actually damage your stone long term to an irreversible state. Use only what we have recommended, not "all purpose" sealers regardless of what packaging says they are for.

The wrong sealer or overapplication of any sealer can result in a very slippery surface.

Any invisible moisture or visible micro debris will be trapped under any sealer if the area is not prepared correctly. Paint preparation and application methods vary from stone to stone and project to project.

Sealing really is not for the DIY list. Use an experienced professional to be safe.

GENERAL CARE

Avoid scratching. Like any stone, scratch it hard enough with something harder and it will mark. Keep this in mind when furnishing or moving objects.

High Pressure Water. Any cleaning is best completed dry first with a broom, then spot cleaning any stains. As tempting as high pressure cleaning may be, focus the spray (at a distance of 30cm on wide spray as a guide for most pressures) only at the stone face itself, not joins.

Acid is not to be used freely and may eat or etch your stone or joins in most instances, regardless of how diluted.

Prevention focus. If for any reason your projects edge restraints or joins show any signs of movement or cracking over time, ensure they are solidified or filled again immediately. If there is any room for stone to move, the surrounding stones may follow and spread creating weak points.